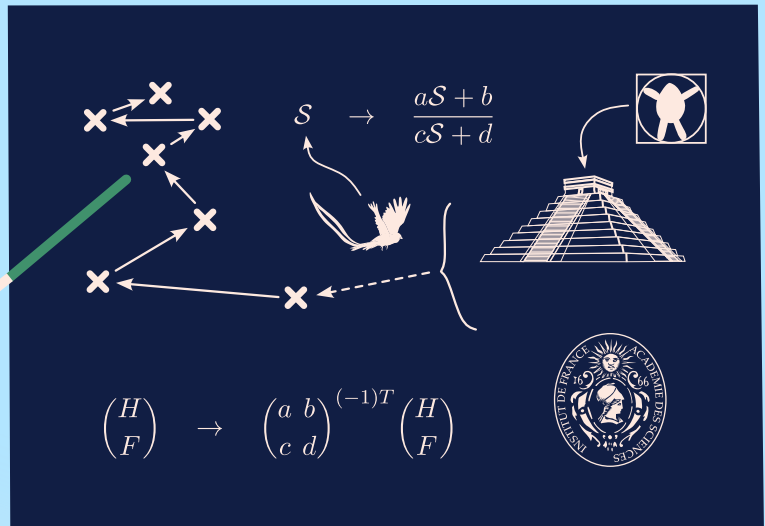
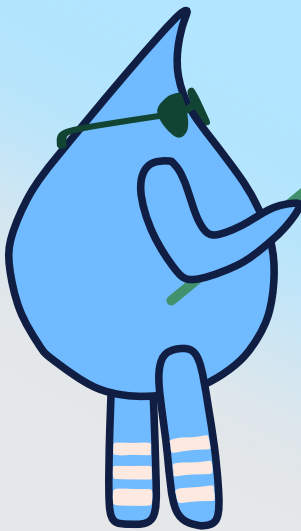


11th French Physicists' Tournament



Problem 7: smart water

If you let water flow in a maze you end up with a physical maze-solving algorithm. Many other algorithms and computations can be done with physical systems. Create a water-based computer (without electronics) that solves an NP-hard problem.

more problems at fpt.science

université
PARIS-SACLAY

FACULTÉ
DES SCIENCES
D'ORSAY

université
PARIS-SACLAY

GRADUATE SCHOOL
Physique



F FONDATION CFM
POUR LA RECHERCHE

edp sciences